



*The*  
TIMEKEEPER

*Hamilton Watch*  
*The Watch of Railroad Accuracy*

The  
TIMEKEEPER



---

---

THE TIMEKEEPER

---

---

# Hamilton Watch

*The Watch of Railroad Accuracy*



HAMILTON WATCH COMPANY

LANCASTER, PENNA., U. S. A.

---

---

## The TIMEKEEPER



HUMAN nature is such that we are not conscious of the passing of time unless we measure it, by hours, minutes and seconds. Man's first conception of time measure was undoubtedly caused by the seeming transit of the sun across the heavens and the movement of shadows cast by its rays. This phenomenon suggested the sun dial, man's first means of marking the passing hours.

But the sun dial indicated time only while the sun shone, and, as civilization increased, the need was felt for some instrument that would mark

time periods regardless of the shining of the sun. Thus, to fill this need, was evolved the clepsydra or water clock—said, in Chinese manuscripts, to have been first made by the celestial Emperor Hwang Ti, over four thousand years ago.



The clepsydra and the sun dial, in various forms, were



the only means of time measure until about the year 700 A. D. when, tradition says, a monk of Chartres invented the sand or hour glass. There is also record of a time candle, said to have been the invention of King Alfred the Great.

The next, and by far the most important change in time-keeping devices came in the form of escapement machinery, actuated by weights, which struck a bell every



hour. These devices were known as "cloche" and from this word we derive the English "clock." A dial, with a

single hand to indicate the passage of the hours, was a later addition to the first "cloche" forms. These cloches, history says, were first made in the thirteenth century. But they were not timepieces of much accuracy until the pendulum principle, discovered by Galileo, was applied to them.

About the year 1480 a Nuremberg genius, Peter Hele, invented a pocket cloche which used a coiled spring as a means of power to drive the wheels. This pocket cloche, the first form of watch, was an exceedingly poor timepiece, owing to the fact that the coil spring exerted power at a diminishing rate. Such early watches, as they ran down, slowed up. This defect was not remedied until Robert Hooke, in 1685, invented the Balance Spring.

From that time onward fur-

ther improvements in the field of timekeeping instruments were of a highly technical nature. Mathematicians were called upon; experts in metals



and jewels, chemists and astronomers—all of them contributed in turn something to the cause of accurate time-keeping. The present high development of the art is best illustrated by comparing the first efforts of man to build a "cloche" with that wonderfully accurate and precise instrument the Hamilton Watch.

You have no doubt felt the thrill which even the most seasoned traveler feels when stepping aboard a famous train. As the moment of departure draws near, a tense expectancy settles over all.

Uniformed men with a confidence born of long experience look critically at their watches. "All aboard" echoes down the platform. The wheels begin to turn. And from then on until the end of the run, watches are consulted many times. The conductor and the brakeman at stations, the engineer while under way, the dispatchers and signalmen at terminals and switching points—all of them must consult watches that are as accurate as human ingenuity can make them.



There is much significance in the fact that if you ask

## The TIMEKEEPER

any of these men the name of the watch they depend upon for this accuracy, the chances are that their answer will be "The Hamilton."

When the Hamilton Watch was first manufactured, Railroad Men bought almost the entire output for use in timing their trains. This was in 1893, at a period when the increasing complexity of train schedules was creating an undreamed of demand for accurate watches.



King Albert of Belgium on his Post-War American tour displayed great interest in our

fine railroads—and how accurately they were timed. And so it was that when His Majesty desired to buy an accurate American Watch—his choice was naturally a Hamilton.

The Hamilton Watch has honestly earned its titles, "The Railroad Timekeeper of America" and "The Watch of Railroad Accuracy." It has proved to be nearest to perfection in timekeeping, filling the exacting demands of Railroad Service.

As was natural, the Hamilton began to attract the attention of men in other walks of life. Other than those having a professional interest in a dependable timekeeper evinced a desire to have Hamilton accuracy.

Accordingly, when the Hamilton Watch Company became convinced that the general public was interested

## The TIMEKEEPER

in having a watch of extreme accuracy, they began the production of Hamilton Timekeepers in suitable sizes for general use.



In this way have come about the various models which you can see at any reliable jeweler's today.

The Hamilton 12-size watch is a graceful thin model and a timekeeper of consummate beauty. It is exactly the kind of watch that any man with an eye for the æsthetic as well as for mechanical excellence would want to own. Expert jewelers say that it is the finest 12-size watch made in America.

The Hamilton 16-size, most popular among Railroad Men, Scientists and Explorers, is midway between the 12- and 18-size models. The 16-size is a model which by reason of its accuracy has become the Standard in Railroad Service. But every Hamilton Watch can be recommended for its accuracy. All Hamiltons are built with the same great precision, and up to the highest of standards.

Hamilton Watches are standardized. This means that all parts of watches of the same grade are interchangeable. Repairs are thus rendered exceedingly simple and inexpensive. Many European watches do not have this advantage, being made of unstandardized parts, and therefore being repaired only with difficulty and at great expense.



## The TIMEKEEPER

Watchmaking has its experts who are as well known in their professions as other leading scientific men are in theirs. It is significant that at the Hamilton factory are found many acknowledged leaders of the watch-building profession.

It is important to remember that scientific perfection extends to all Hamilton models, from the accurate wrist watches for women to the large 18-size movements. Every part of a Hamilton and every bit of work involved must come up to the highest scientific standards. And these standards are never lowered to admit of passing inferior work. The Hamilton Company manufactures no cheap or low-grade watches. Hamiltons are born Timekeepers.

And the men who make the

Hamilton do not work merely to meet a standard. Rather, like good craftsmen, they are filled with that spirit which moved their forefathers to spend the better part of a lifetime in the construction of an ingenious and beautiful timekeeper for king or patron.

The amount of time taken to produce a Hamilton Watch is another bit of evidence which shows how exacting are the requirements of the Hamilton factory. The average time



required is nine months. No watch is ever made in less than

## The TIMEKEEPER

seven months—and often it takes a full year and more. Of this time, two months alone are consumed in the assembling and finishing department, where each tiny part is subjected to accuracy tests and the finished watch fully tested.

Yet, because of the extraordinary care that is taken in the production of each Hamilton, it will never be a watch that you will see everywhere. It will always possess an exclusiveness peculiar to precise mechanical instruments of the very highest grade.

This limited output is at the same time a safeguard. It insures the quality of the Hamilton Watch that you purchase, and enables the Hamilton Watch Company to give a broad guarantee with every watch sold.

People who appreciate the

value of Accuracy know that the purchase of a high-grade watch is not to be undertaken lightly. Most of them



therefore choose the Hamilton. For, when you buy a Hamilton you can do so with the profound assurance that you are buying a watch that will, with proper care, give you accurate time for long years to come.

It is significant, too, that the most modern mode of transportation is turning to Hamilton for accurate time. The United States army plane piloted and navigated by



Lieutenants Hegenberger and Maitland was Hamilton equipped; this epochal flight to the Hawaiian Islands was made possible by modern airplane design plus timekeepers accurate enough to answer the most precise navigational needs. The Byrd Antarctic Expedition is Hamilton equipped throughout. Many air-mail pilots, professional aviators and amateurs, realizing the value of accuracy, are turning naturally to the Hamilton as their chosen timepiece.



America's position in the world today is the result of our national ability to stretch time by saving it; to make every minute yield its full sixty seconds. Modern life demands, above all things, full use of your time. Hamilton Watches are designed to render modern timekeeping service. They are amazingly accurate and dependable. And with this accuracy and dependability goes a beauty of outward design that makes for complete satisfaction.

## HAMILTON THIN MODELS

A WATCH may be valuable for its beautiful and rare case alone, but the real and permanent value lies most in its timekeeping qualities.

The best watch is undoubtedly the one which keeps time most accurately and dependably.

This quality is inherent in

### HAMILTON 922 MOVEMENT 23 Jewels—Adjusted to 5 Positions

White gold finish bridge movement, pendant set, 23 extra fine ruby and sapphire jewels in gold settings, patent motor barrel, gold train, steel escape wheel, double roller escapement, sapphire pallets, micrometric regulator, Breguet hairspring, compensation balance, adjusted to temperature, isochronism, and five positions. Sold cased only.

### HAMILTON 902 MOVEMENT 19 Jewels—Adjusted to 5 positions

White gold finish, bridge movement, pendant set, 19 extra fine ruby and sapphire jewels in gold settings, patent motor barrel, gold train, steel escape wheel, double roller escapement, sapphire pallets, micrometric regulator, Breguet hairspring, compensation balance, adjusted to tem-

perature, isochronism, and five positions. Sold cased only.

every Hamilton—all Hamilton Watches are first of all accurate timekeepers.

On the following pages, fourteen to twenty-two, you will find pictured the various Hamilton 12-size thin models. These are fitted with the different Hamilton movements as hereunder described.

### HAMILTON 918 MOVEMENT 19 Jewels—Adjusted to 3 Positions

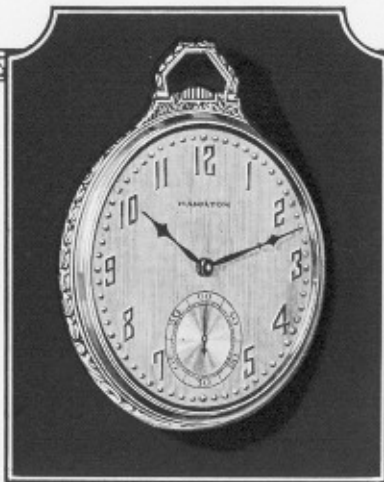
$\frac{3}{4}$  plate movement, pendant set, 19 extra fine ruby and sapphire jewels in gold settings, steel escape wheel, double roller escapement, sapphire pallets, micrometric regulator, Breguet hairspring, compensation balance, adjusted to temperature, isochronism, and three positions. Sold cased only.

### HAMILTON 912 MOVEMENT 17 Jewels—Adjusted

$\frac{3}{4}$  plate movement, 17 jewels, double roller escapement, micrometric regulator, Breguet hairspring, and compensation balance, adjusted, and sold cased only.

THE  
MASTERPIECE  
GROUP

REMARKABLY fine examples of the watchmakers craft—the finest pocket watches that Hamilton build. Each one fitted with a Hamilton 23 jewel Special Masterpiece movement adjusted to five positions, heat, cold and isochronism.



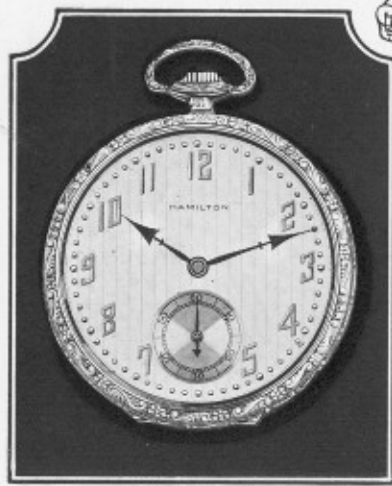
THE  
PLATINUM  
MODEL

THE bezel of this model is a simple circlet of platinum while the center and the bow are beautifully engraved in high relief.

Dial of sterling silver with raised numerals of solid gold and solid gold hands.

\$685.00

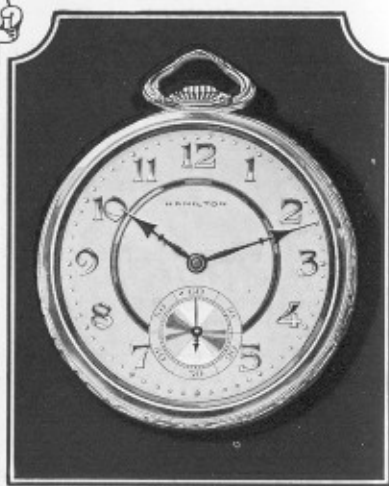
The MASTERPIECE  
IN PLATINUM



The MASTERPIECE  
MODEL "B"—18K GOLD

ELABORATE carving in high relief features this 18K Masterpiece Model "B." The dial is of sterling silver with raised numerals of 18K gold. Available in either 18K green or white gold.

\$250.00



The MASTERPIECE  
MODEL "C"—18K GOLD

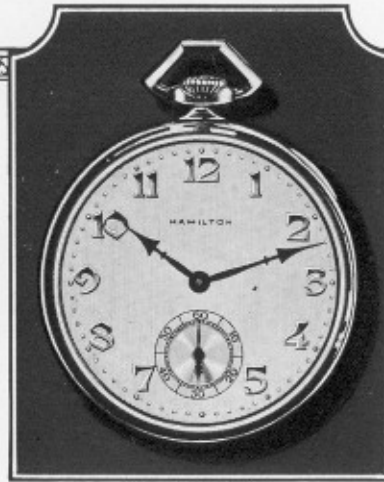
THIS exquisitely designed case of 18K white or green gold is hand-made throughout and richly carved. The dial is of sterling silver with raised numerals of 18K gold.

\$250.00

THE  
GIRARD  
MODEL

A BEAUTIFULLY designed case of utter simplicity yet with a richness that will ever be in vogue. Hand-made and fashioned from extra heavy 14K green or white gold.

Truly a model of great distinction.



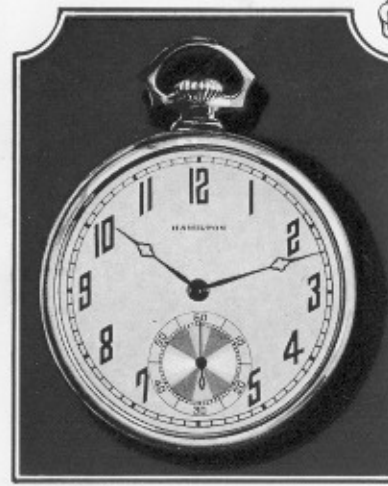
The GIRARD  
MODEL

THE  
GIRARD  
MODEL

AVAILABLE fitted only with the following Hamilton movements:

- With 922 movement \$185.00
- With 902 movement \$165.00
- With 918 movement \$125.00

Dial shown, Silver or Green Gold finish, with 18K Gold Numerals. Extra charge \$12.00

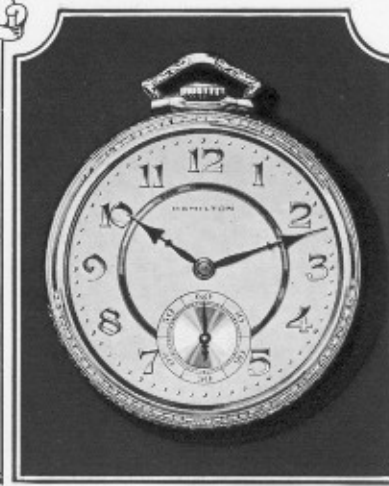


The BASCINE  
MODEL

SEVERELY plain yet beautiful in its modelling, the Plain Bascine is available in heavy 14K yellow or green gold or filled gold. Fitted only with the following Hamilton movements:

	14K	Filled Gold
With 922 movement,	\$150.00	\$117.00
With 902 movement,	125.00	92.00
With 918 movement,	100.00	65.00

Dial shown at no extra charge



The BRUNSWICK  
MODEL

AVAILABLE in 14K green or white gold with a touch of beautiful engraving. Fitted only with the following Hamilton movements:

- With 922 movement, \$160.00
- With 902 movement, 140.00
- With 918 movement, 105.00

Dial shown, Satin Finish Silver with Blue Enamel Circlet, 18K raised gold numerals, extra charge \$12.00

THE  
RAMSAY  
MODEL

THE sheer simplicity of this model is its chiefest charm. Its distinguished appearance is due in no little part to the fact that not a particle of decoration is used to enhance its beautiful form. Fashioned of 14K yellow or white gold.



THE  
RAMSAY  
MODEL

IS available fitted only with the following Hamilton movements:

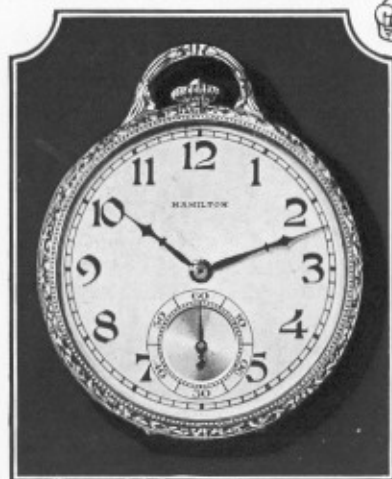
With 922 movement \$160.00

With 902 movement \$140.00

With 918 movement \$100.00

Dial shown at no extra charge.

The RAMSAY  
MODEL



The HAWTHORNE  
MODEL

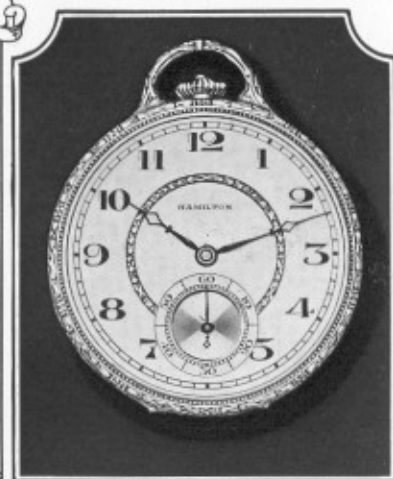
ENGRAVED case of graceful design, 14K Green or White Gold. Fitted only with following Hamilton movements:

With 922 movement, \$160.00

With 902 movement, 140.00

With 918 movement, 105.00

Dial shown at no extra charge.



The IRVING  
MODEL

ENGRAVED case of same graceful design, fashioned of 14K filled Gold. Fitted only with following Hamilton movements:

With 922 movement, \$120.00

With 902 movement, 95.00

With 918 movement, 70.00

Dial shown, Brushed Green Gold or Silver Finish. Extra charge \$3.00

THE  
RITTENHOUSE  
MODEL

THIS new Hamilton model is designed for the man who likes a reasonable degree of richness in the engraving of his watch. The "Rittenhouse" model is available only in 14K filled green or white gold.



THE  
RITTENHOUSE  
MODEL

IS fitted only with the following Hamilton movements:

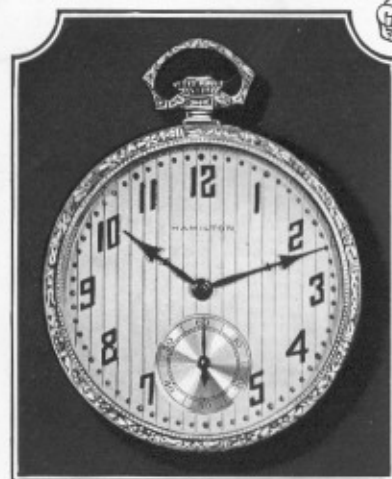
With 922 movement \$120.00

With 902 movement \$95.00

With 918 movement \$70.00

Dial shown, extra charge, \$12.00

The RITTENHOUSE  
MODEL



The LAFAYETTE  
MODEL

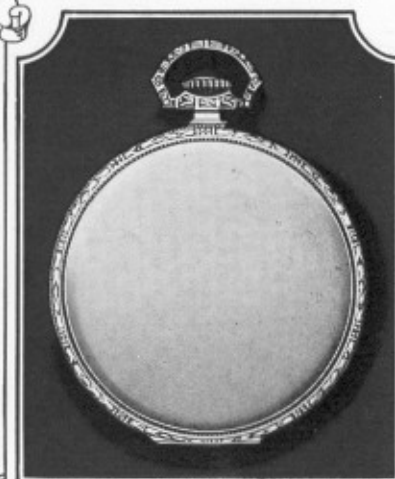
BEAUTIFULLY Engraved case of 14K Green or White Gold. Fitted only with following Hamilton movements:

With 922 movement, \$160.00

With 902 movement, 140.00

With 918 movement, 105.00

Dial, in Silver or Green Gold finish, 18K Raised Gold Numerals. Extra charge \$12.00



The LEXINGTON  
MODEL

CASE of 14K filled Green or White Gold, artfully engraved. Fitted only with following Hamilton movements:

With 922 movement, \$120.00

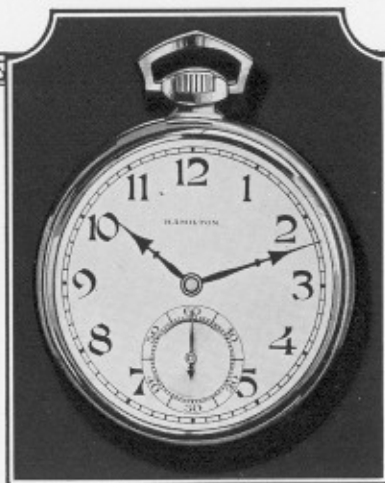
With 902 movement, 95.00

With 918 movement, 70.00



THE  
FRODSHAM  
MODEL

ANOTHER model that depends largely upon sheer simplicity for beauty—and achieves it. The Hamilton Frodsam model is available in cases of 14K and 14K filled green or white gold.



The FRODSHAM  
MODEL

THE  
FRODSHAM  
MODEL

IS fitted only with the following Hamilton movements:

With 922 movement  
\$150.00

In filled gold \$117.00

With 902 movement  
\$125.00

In filled gold \$92.00

With 918 movement  
\$100.00

In filled gold \$65.00

THE  
ROBERT MORRIS  
MODEL

TRULY Colonial in feeling and as exquisitely proportioned as the Furniture of Hephelwhite or the silverware of Paul Revere. This new Hamilton model is fashioned of filled green or white gold,

\$55.00

fitted only with Hamilton 912 movement.



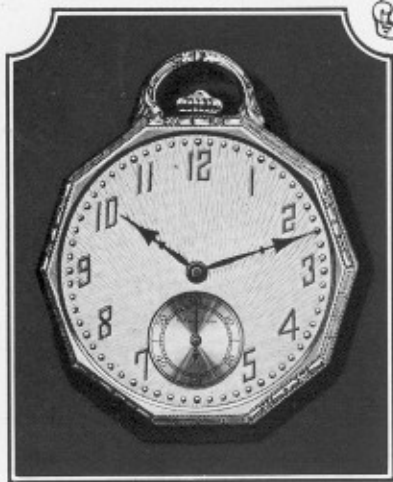
The ROBERT MORRIS  
912 MODEL

THE  
ROBERT MORRIS  
MODEL

IS named in honor of Robert Morris, financier of the American Revolution, who in his early days was a watchmaker. With dial shown the Robert Morris model is priced at

\$55.00

fitted only with Hamilton 912 movement.



The DECAGON  
MODEL

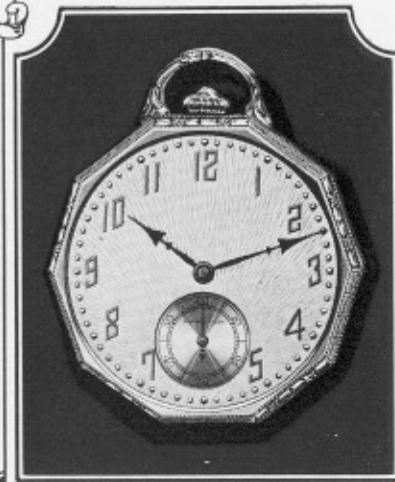
A SHAPELY case of 14K Green or White Gold, Engraved. Fitted only with following Hamilton movements:

With 922 movement, \$160.00

With 902 movement, 140.00

With 918 movement, 105.00

Dial shown, Silver or Green Gold, Moire finish, 18K Raised Gold Numerals. Extra charge \$12.00



The DECAGON  
MODEL

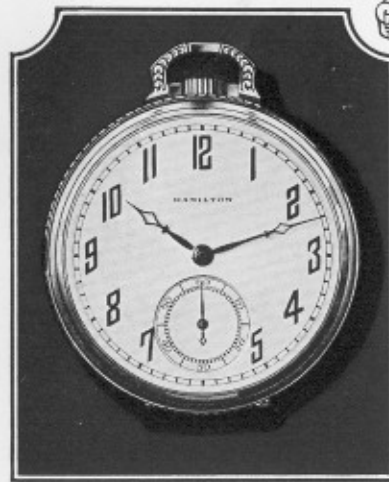
FASHIONED of 14K filled Green or White Gold, Engraved. Fitted only with following Hamilton movements:

With 922 movement, \$125.00

With 902 movement, 100.00

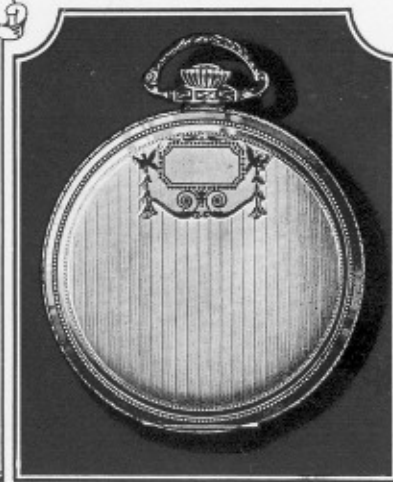
With 918 movement, 75.00

Dial shown, Silver or Green Gold, Moire finish, 18K Raised Gold Numerals. Extra charge \$12.00



The WHEATLAND  
912 MODEL

ANOTHER new Hamilton model with just the proper touch of engraving on the center and on the smart shaped bow. Fashioned of filled green or white gold, fitted only with Hamilton 912 movement, \$50.00



The FILLMORE  
912 MODEL

CONSERVATIVELY chased case, obtainable in either Green or White filled Gold. Fitted only with Hamilton 912 movement. \$50.00

With fancy engraved back, as shown, extra charge \$2.00

THE  
HAMILTON  
912  
BASCINE  
MODEL

THIS model of filled gold — yellow or green—makes available a Hamilton Thin Model at the most reasonable price of

\$48.00



The HAMILTON 912 BASCINE  
MODEL

THE  
HAMILTON  
912  
BASCINE  
MODEL

FITTED only with the Hamilton 912 seventeen jewel adjusted movement. This Hamilton model exactly as pictured,

\$48.00

THE  
912 FRODSHAM  
MODEL

A BEAUTIFUL watch—beautiful in its simplicity—beautiful in either green or white filled gold. Fitted only with the Hamilton 912 movement,

\$50.00

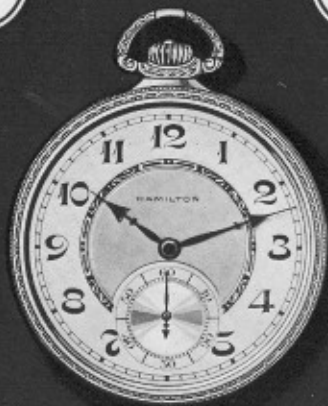


The 912 FRODSHAM  
MODEL

THE  
912 FRODSHAM  
MODEL

THE dial shown on this model has a highly polished center and is priced extra at \$3.00. Your jeweler can show you the Frodsam model with other dials at

\$50.00



The GARFIELD  
912 MODEL



The VAN BUREN  
912 MODEL



The JACKSON  
912 MODEL



The JEFFERSON  
912 MODEL

BEAUTIFULLY decorated case of 14K filled gold, green or white, fitted only with Hamilton 912 movement.

\$75.00

AN odd shape, rigid bow model fashioned of filled green or white gold; case handsomely engraved. Fitted only with Hamilton 912 movement,

\$55.00

CASE of Green or White filled Gold, enriched with Enamel Inlaid Design. Fitted only with Hamilton 912 movement.

\$54.00

CHARMINGLY chased case, to be had in either Green or White filled Gold. Fitted only with Hamilton 912 movement.

\$50.00



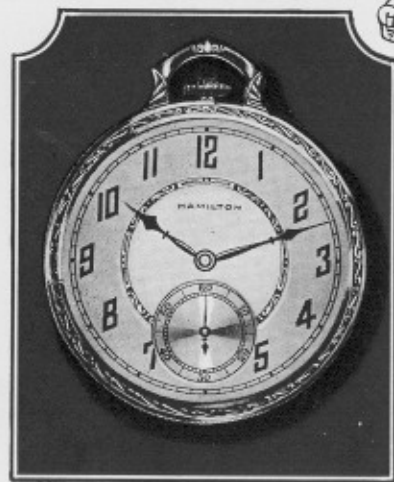
### HAMILTON ACCURACY

HAMILTON Accuracy is a quality proved through years of service. Ever since 1893 Hamilton Watches have been known for their superior timekeeping qualities. They have justly earned their enviable reputation for accuracy.



### HAMILTON DEPENDABILITY

IN addition to their reputation for accuracy Hamilton Watches are famed also for their utter dependability—they are built up to the highest possible standards—standards which are never lowered for any cause whatsoever.



*The CLEVELAND*  
912 MODEL

CHASED case of beautiful design featuring the new rigid bow—a style touch with a large element of the practical. Green or White filled Gold fitted only with Hamilton 912 movement.

\$50.00



*The DECAGON*  
912 MODEL

THE popular Decagon shape with smartly chased decoration. The rigid bow is also a feature of this model. Available in either filled Green or White Gold. Fitted only with Hamilton 912 movement.

\$52.00



### HAMILTON STRAP WATCHES FOR MEN

SMARTNESS—convenience—accuracy and dependability are blended in Hamilton Strap models for men. Hamilton Strap Watches are being used, in increasing numbers, by men of discrimination for business and sports wear. Aviators are adopting Hamilton Strap Watches as their very own. On pages twenty-four to twenty-seven are shown a variety of exceedingly smart models. The movement in most of these attractive watches is the Hamilton "6/0" 17 jewels.

The Piping Rock Model and the Meadowbrook are, however, fitted only with the Hamilton 19 Jewel Strap Watch Movement.





## HAMILTON 19 JEWEL STRAP WATCHES FOR MEN

THE two models here shown are fitted only with the Hamilton 979, nineteen jewel 6/0 size movement; an entirely new and exceedingly high-grade strap watch movement.



THE MEADOWBROOK MODEL

FOR those who desire a strap watch of unusual character we offer the Meadowbrook. It is available in cases of platinum, or 14K yellow or white gold priced as follows:

In platinum hand-made case with white gold buckle—\$360.00

In platinum hand-made case with platinum buckle—\$400.00

In 14K gold, yellow or white—\$100.00



THE PIPING ROCK MODEL

STYLED by designers of international prominence, the Piping Rock model is ultra modern in its appeal; a very part of the age in which we live. The numerals of gold backed by enamel are a part of the case—not the dial. The Piping Rock is designed for those who are satisfied only with the best and is available in either 14K yellow or white gold priced at \$125.00



THE HASTINGS MODEL

*Fitted with 17 jewel movement*

Case of 14K filled Yellow or White Gold ..... \$55

Case of 14K Yellow or White Gold ..... 85



PLAIN TONNEAU MODEL

*Fitted with 17 jewel movement*

Case of 14K filled Gold, Green or White ..... \$55

Case of 14K Gold, Green or White ..... 85



ENGRAVED TONNEAU MODEL

*Fitted with 17 jewel movement*

Case of 14K filled Gold, Green or White ..... \$57

Case of 14K Gold, Green or White ..... 87

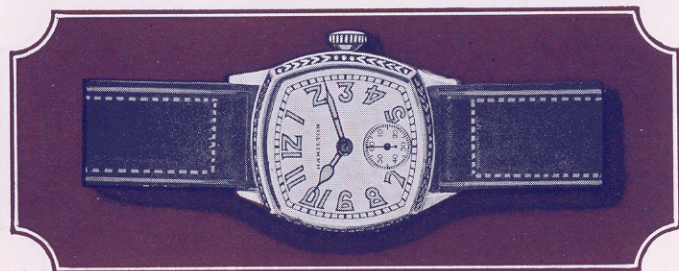




PLAIN CUSHION MODEL

*Fitted with 17 jewel movement*

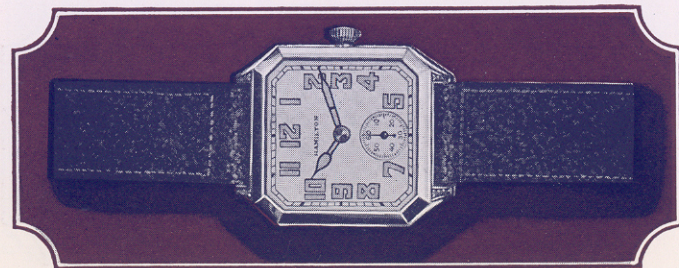
Case of 14K filled Green or White Gold ..... \$50  
Case of 14K Gold, Green or White ..... 75



ENGRAVED CUSHION MODEL

*Fitted with 17 jewel movement*

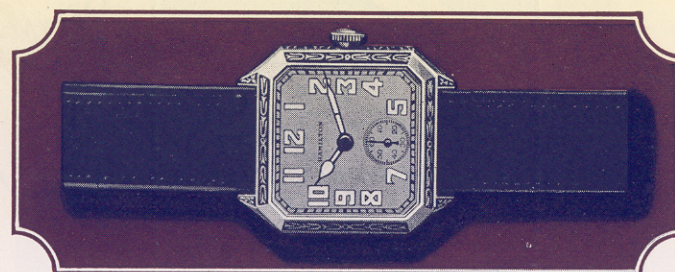
Case of 14K filled Green or White Gold ..... \$52  
Case of 14K Gold, Green or White ..... 77



PLAIN SQUARE MODEL

*Fitted with 17 jewel movement*

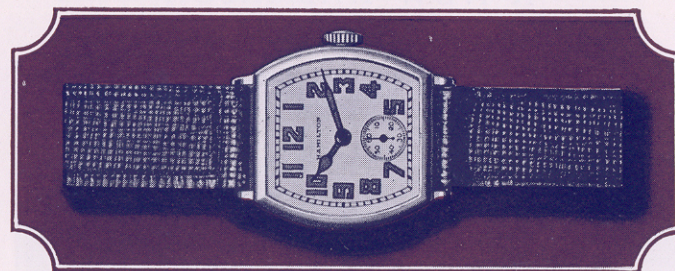
Case of 14K filled Green or White Gold ..... \$55  
Case of 14K Gold, Green or White. .... 85



ENGRAVED SQUARE MODEL

*Fitted with 17 jewel movement*

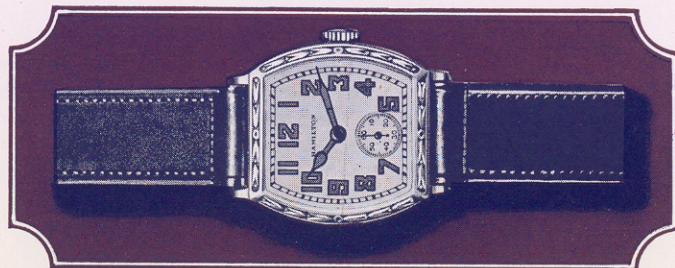
Case of 14K filled Green or White Gold ..... \$57  
Case of 14K Gold, Green or White ..... 87



PLAIN BARREL MODEL

*Fitted with 17 jewel movement*

Case of 14K filled Green or White Gold ..... \$55  
Case of 14K Gold, Green or White ..... 85



ENGRAVED BARREL MODEL

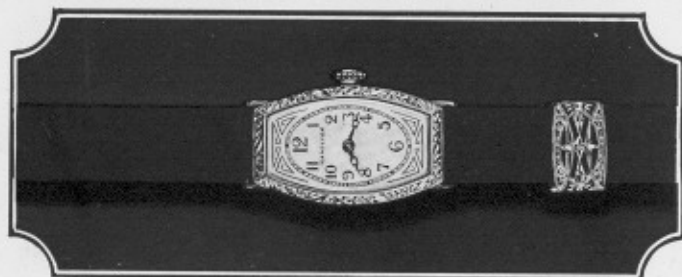
*Fitted with 17 jewel movement*

Case of 14K filled Gold, Green or White ..... \$57  
Case of 14K Gold, Green or White. .... 87





### A NEW HAMILTON THE CHEVY CHASE MODEL



One of a new series of Hamilton  
Wrist Watches for Women

(Available after November 15, 1928)

FOR the women of America—this newest and smallest Hamilton has been designed. Years of careful research and study, months of careful testing to insure accuracy worthy of the Hamilton name, have gone into its making. We offer this new Hamilton model for women fully convinced of its worth as a timepiece and of the graceful artistry that makes it a thing of beauty.

The Chevy Chase model, exceedingly smart and dainty, is fashioned of 14K white gold, engraved.

\$75.00

The movement fitted in the Chevy Chase model is oval shape, 6¾ ligne, 17 jewels adjusted—a true Hamilton in every sense of the word.



### MILADY'S WATCH OF ACCURACY

SLIGHTLY smaller than the Hamilton strap models for men and fitted with the same accurate and dependable movement, the women's wrist models shown below will appeal because of their beauty and their splendid reputation for accuracy. All of these models are fitted with "seconds" hand, a feature much desired by nurses and business women.



TONNEAU MODEL

Engraved case of 14K filled Green or White Gold ..... \$48  
Engraved case of 14K Gold, Green or White ..... 60



DECAGON MODEL

Engraved case of 14K filled Green or White Gold ..... \$48  
Engraved case of 14K Gold, Green or White ..... 60



CUSHION MODEL

Engraved case of 14K filled Green or White Gold ..... \$48  
Engraved case of 14K Gold, Green or White ..... 60



# RAILROAD MODELS

STURDILY wrought from gold filled stock, these models of rugged beauty are specially constructed for railroad use. All Hamilton railroad models are fitted with the famous Hamilton 992 movement—famed everywhere as the Railroad timekeeper of America—the watch that times America's fastest trains. Your choice of four different railroad type dials.



No. 2 RAILROAD  
MODEL

## MODEL NO. 2

SPECIAL pendant construction feature this model which incorporates a connecting bar making it impossible for the bow or crown to come out. With Hamilton 992 movement, 14K gold filled, green or white.

\$65.00

10K gold filled yellow  
\$60.00



No. 5 RAILROAD  
MODEL

HAMILTON'S newest contribution to beauty and sturdiness in railroad watches. 14K gold filled, green or white.

\$65.00

10K gold filled yellow, \$60.00



No. 4 RAILROAD  
MODEL

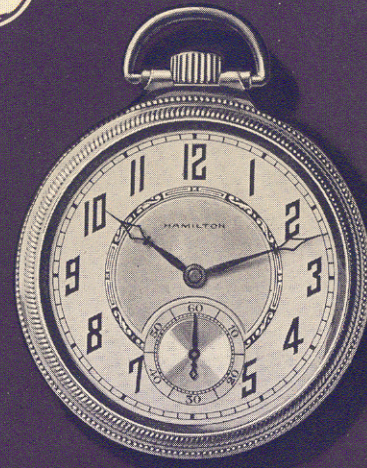
A RAILROAD model of sturdy beauty with rigid bow and richly decorated bezel. 14K gold filled, green or white.

\$65.00

10K gold filled yellow, \$60.00

## HAMILTON TRAFFIC SPECIAL

Of interest to every man in whose business accurate time is a factor. Men in the building trades—technicians in industries—civil and public service employees—will find this Hamilton special model to be within easy reach of their purse.



The TRAFFIC SPECIAL

## HAMILTON TRAFFIC SPECIAL

THIS model is a member of the famous Hamilton family—made by Hamilton craftsmen. 17 jewel movement, fitted in decorated case with two tone metal dial.

\$35.00

## HAMILTON MOVEMENTS 16 SIZE AND 18 SIZE

SOLD AS MOVEMENTS ONLY  
CASED BY YOUR JEWELER TO SUIT YOUR REQUIREMENTS

### No. 950 OPEN FACE

White gold finish, bridge movement pendant or lever set, 23 extra fine ruby and sapphire jewels in gold settings, patent motor barrel, gold train, escapement cap jeweled, steel escape wheel, double roller escapement, sapphire pallets, Breguet hair spring, micrometric regulator, compensation balance, double sunk dial, adjusted to temperature, isochronism, and five positions.

### No. 992 OPEN FACE

Nickel,  $\frac{3}{4}$  plate movement, pendant or lever set, 21 extra fine ruby and sapphire jewels in gold settings, double roller escapement, sapphire pallets, gold center wheel, steel escape wheel, micrometric regulator, Breguet hairspring, double sunk dial, compensation balance, beautifully damaskeened, adjusted to temperature, isochronism, and five positions.

### No. 940 OPEN FACE

Nickel, 21 extra fine ruby and sapphire jewels in gold settings, patent motor barrel, adjusted to temperature, isochronism, and five positions, double roller escapement, steel escape wheel, Breguet hairspring, compensation balance, patent micrometric regulator, double sunk dial, gilt lettering, beautifully and elegantly damaskeened.